

CROW WING  
*Soil & Water*  
CONSERVATION DISTRICT

# 2018 Winter Newsletter



2017 SWCD of the Year Award Winner



Jim Brandt: 2017 Conservationist Award

**2017 Crow Wing County Plat Books available!**

ID public/private landowners, lakes, trails & more.

**\$37 + tax**

## Community Funding Available!

Tree planting, rain gardens, shoreline buffers, and erosion control. To apply, applicants must partner with a group or organization: Lake or homeowner assn., faith group, business, citizen group or non-profit.

**Applications Due Fri. March 30, 2018!**

218-828-6197 or [www.crowwingswcd.org](http://www.crowwingswcd.org) for more details



**2017 SWCD Staff**

Tasha, Melissa, Sheila, Ben, Darren, Nick, Beth



Native Plant Photo Contest Winner "Milkweed" **Jennifer Quam**

**We can do presentations or workshops for your group.**

Where: Your place, or Land Services Building in Brainerd

Fee: \$100-\$250 (Erosion Issues, Rain Gardens, Tree/Plant ID, Wetland).

## TREE SALE ORDERS ACCEPTED:

January 1st, 2018 - February 28th, 2018: or until sold out

### 5 WAYS TO ORDER!

1. Online [www.crowwingswcd.org](http://www.crowwingswcd.org)
2. Call 218-828-6197
3. E-mail [tasha.lauer@crowwingswcd.org](mailto:tasha.lauer@crowwingswcd.org)
4. Office Walk-in
5. Mail

322 Laurel Street, Ste. 22, Brainerd, MN 56401

**OPEN HOUSE: Friday, February 2**  
9 am to 3 pm, 322 Laurel Street, downstairs

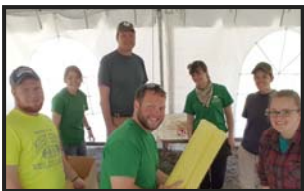
**TREE & PLANT PICK UP:**

*The Northland Arboretum in Brainerd*

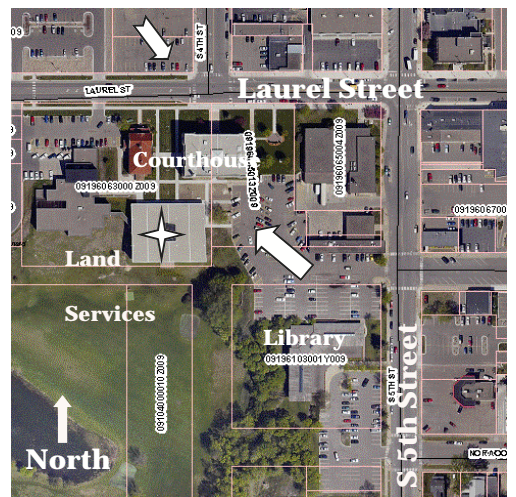
Thursday May 3rd: 4:00 pm to 6:00 pm

Friday May 4th: 9:00 am to 5:00 pm

Saturday May 5th: 9:00 am to 12:00 noon



2017 Tree Sorting



Office Location



Parking

**322 Laurel Street, Suite 22, Brainerd, MN**

E-mail: [tasha.lauer@crowwingswcd.org](mailto:tasha.lauer@crowwingswcd.org)

Phone: 218-828-6197

Facebook: [www.facebook.com/cwsxcd](http://www.facebook.com/cwsxcd)

Web: [www.crowwingswcd.org](http://www.crowwingswcd.org)



Crow Wing SWCD  
 322 Laurel St. Suite 22  
 Brainerd, MN 56401

2018 Tree Sale Order Form Inside

## 2018 Tree/Shrub/Flowers Order Form inside!

### Do you want help with your Woods?

Funds are available to assist you with woodland projects, including a site specific plan that tells what type of trees and habitats you have.

- 10 Yr Woodland Stewardship Plan  
(Ask if you qualify for funding!)
- Tree Tube/Bud Capping Installation
- Invasive Species Control
- Wildlife Habitat/Pollinator Habitat
- Tree & Shrub Planting

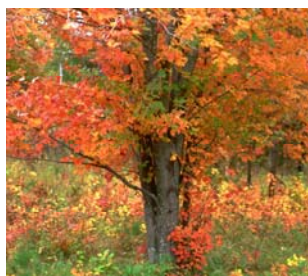
Contact [sheila.boldt@crowwingswcd.org](mailto:sheila.boldt@crowwingswcd.org) 218-828-6197 for info.

### Forest Kit

Tree	Height	Spacing	Soil/sun
Red Pine	50' to 80'	15' to 25'	Dryer/full to partial sun
Red Oak	50' to 75'	15' to 25'	Moist to dry / full to partial sun
Paper Birch	50' to 70'	5' to 10'	Sandy to loamy soils / full sun
Juneberry (serviceberry)	6' to 9'	3' to 5'	Moist to well-drained soil /full to partial



**Red Pine**



**Red Oak**



**Juneberry**



**Paper Birch**

GREAT MIX TO REPLACE YOUR TREES!  
 PLANT AT THE APPROPRIATE SPACING.

Restoring prairie just got easier. Many landowners and managers have land that they would like to see covered with native flowers and grasses. But, creating a prairie is hard and often unpredictable work. The techniques and types of seeds planted will vary depending on the current state of the land, how moist or dry the site is, and type of prairie you would like to establish. To deal with these issues, The Nature Conservancy and the University of Minnesota have developed 20 different restoration guides, each specific to one of five different types of starting conditions, two different moisture levels, and two different intended uses for restored prairie. Each guide includes recommended techniques, timing and plant species, as well as estimated costs for completing a successful prairie restoration. The guides can be downloaded for free at: [nature.org/MNPrairieRestorationGuides](http://nature.org/MNPrairieRestorationGuides).



**322 Laurel Street, Suite 22, Brainerd, MN**

**E-mail:** [tasha.lauer@crowwingswcd.org](mailto:tasha.lauer@crowwingswcd.org) **Phone:** 218-828-6197  
**Facebook:** [www.facebook.com/cwsxcd](http://www.facebook.com/cwsxcd) **Web:** [www.crowwingswcd.org](http://www.crowwingswcd.org)